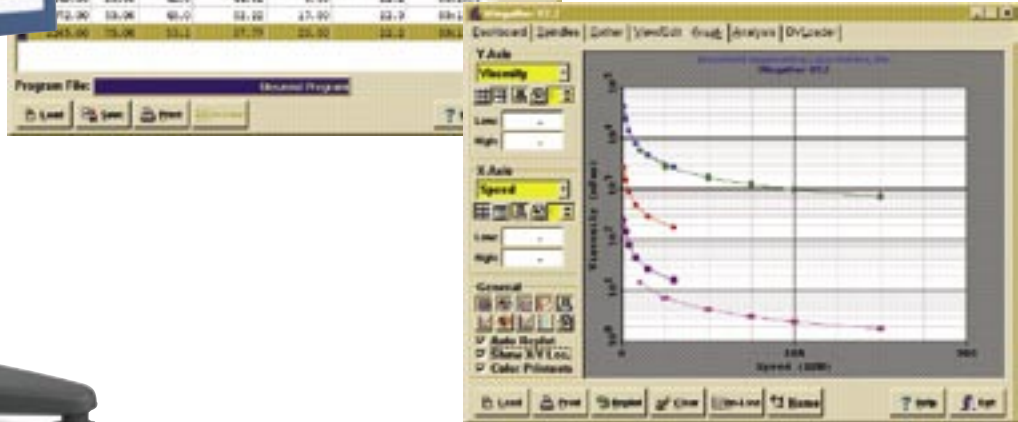


WINGATHER FOR THE DV-II+PRO VISCOMETER



THIS DATA COLLECTION AND GRAPHING SOFTWARE PROVIDES AN EASY MEANS TO GATHER TABULAR DATA, GRAPH AND PLOT THAT DATA, AND CREATE PERMANENT TEST RECORDS FOR ANALYSIS.

Use Brookfield's Wingather application software to collect, analyze or record test data in any of five different modes:

- Manual** – A data point is taken when the operator chooses
- Vari-Speed** – A data point is taken when the operator changes the viscometer speed
- Timed Stop** – A data point is taken at an operator defined time interval.
- Timed Torque** – Data is taken at an operator defined time interval until an operator defined % torque value is reached.
- Spring Relaxation** – Data is taken at an operator defined time interval as the spindle "unwinds" (motor off condition).

Data is output directly to your PC. The data can easily be graphed. Overlay plots showing multiple sets of test data are possible.

FEATURES & BENEFITS

- Automates data collection to save time
- Reduces potential operator error when recording data
- Create viscosity flow curves (rheograms) and a permanent record of each test
- Up to six data sets may be plotted and overlaid for product comparisons
- Viscosity plots can be configured vs. time, temperature, shear rate, and shear stress
- Data can be saved as a Wingather file (Paradox Database) or exported to Excel format
- Math modeling for yield stress calculations (Bingham Plastic, Casson, Power Law, IPC Paste analysis)



Labomat Essor
37 Bld Anatole France
F - 93287 Saint Denis Cedex
Tel.: +33 1 48 09 66 11
Fax: +33 1 48 09 98 65
E-mail : info@labomat.com
www.labomat.eu

Labomat Essor
Vlamingstraat 4
B - 8560 Wevelgem
Tel.: +32 56 43 28 13
Fax: +32 56 43 28 14
E-mail : info@labomat.com
www.labomat.eu



L.E Solutions
6 Imm B Résidence Ibn Batoua
Place Prince Sidi Mohammed
Belvédère
MA - 20300 Casablanca
Tel.: +212 52 22 41 714
Fax: +212 52 22 42 751
younesbaou@menara.ma
www.labomat.eu